



Orange County COVID-19 Vaccine Taskforce

Friday, February 26th, 2021

Task Force Group Members

<p>Ellen Ahn, JD, MSW Executive Director, KCS OC Asian Pacific Islander COVID 19 Task Force</p>	<p>Oliver Chi City Manager City of Huntington Beach</p>	<p>Stu Greenberg Tustin Police Chief Representing Orange County Chiefs of Police and Sheriff's Assoc.</p>	<p>Mario A. Ortega President and CEO Abrazar, Inc</p>
<p>Gloria Alvarado Executive Director for the Orange County Labor Federation</p>	<p>Dan Cooper, MD Associate Vice Chancellor for Clinical and Translational Research, University of California, Irvine</p>	<p>Peter Himber, MD, Medical Director for Regional Center for Orange County</p>	<p>Jeff Pagano UCI, OC Veterans & Military Families Collaborative</p>
<p>Michelle Anderson Director, Orange County Sheriff's Department, Emergency Management Division Orange County Operational Area</p>	<p>Jason Cord, M.D. President, Board of Directors, OC Medical Association Chief of Radiology, Kaiser Permanente Orange County SCPMG Government Relations Lead, Orange County</p>	<p>Candi Kern President Fourth District PTA</p>	<p>Karen Pavic-Zabinski, PhD RN, MSN, MBA, MA, MS Regional Director Of Ethics Providence St. Joseph Health Southern California</p>
<p>Lisa Armony Senior Director, Community Relations OC Interfaith Network Director Community Relations Jewish Federation OC</p>	<p>Lucy Dunn President and CEO Orange County Business Council</p>	<p>Aaron Kheriaty, MD UCI School of Medicine</p>	<p>Raj Rajalingam Restaurant Industry</p>
<p>Whitney Ayers OC Regional Vice President Hospital Association of Southern California</p>	<p>Emily Fonda, M.D. Interim Chief Medical Officer CalOptima</p>	<p>Cevadne Lee, MPH Director, Community Outreach & Engagement UCI Cancer Center</p>	<p>Philip Robinson, MD, FIDSA Medical Director of Infection Prevention and Hospital Epidemiology, Hoag Hospital</p>
<p>Isabel Becerra Chief Executive Officer OC Coalition of Community Clinics</p>	<p>Megan Francis Executive Director, Orange County Dental Society</p>	<p>Anne Light, MD Medical Director OC Social Services Agency</p>	<p>Jasjit Singh, MD CHOC Children's Hospital</p>
<p>Bernadette Boden-Albala M.P.H., Dr.Ph Director and Founding Dean of the Program in Public Health University of California, Irvine</p>	<p>The Most Rev. Timothy Freyer Auxiliary Bishop The Roman Catholic Diocese of Orange</p>	<p>Adam Loeser Fire Chief City of Brea</p>	<p>Lisa Wright Jenkins President & CEO Council on Aging – Southern California</p>
<p>America Bracho, MPH, CDE Executive Director Latino Health Access</p>	<p>Joy Anne Fumera, RN, MSN Registered Nurse</p>	<p>Helen Macfie, Pharm.D., FABC Chief Transformation Officer Executive Administrator, CIN, MemorialCare</p>	<p>Rebecca Yee Ensign Services</p>
<p>Margaret Bredehoft, Dr. PH Deputy Agency Director, Public Health Services OC Health Care Agency</p>	<p>Jeff Goad, Pharm.D., MPH, FAPhA, FISTM, FCPPhA, FCSHP Professor & Chair Department of Pharmacy Practice, School of Pharmacy, Chapman University</p>	<p>Lieutenant Dave Main Orange County Sheriff's Department Security Bureau</p>	<p>Matt Zahn, MD Medical Director of the Division of Communicable Disease Control, OC Health Care Agency</p>
<p>Clayton Chau, M.D., Ph.D Director OC Health Care Agency</p>	<p>Laura Gomez Teacher Santa Ana Unified School District</p>	<p>Al Mijares, Ph.D. County Superintendent of Schools</p>	

Agenda

1. Introductions

- Welcome
- Session Agenda & Objectives

2. Overview of Updates, Recommendations & Future Considerations

- Informational Update: Phase 1b: Essential Workers and Individuals 65+
- Informational Update: Individuals with Chronic Conditions or Other Disabilities
Creating High Risk
- ***Recommendation for Vote: Allocating Different Vaccine Platforms***
- Future Consideration: Timing to Open Up to All Individual

3. Discussion and Vote

4. Next Steps & Wrap-Up

Updated COVID-19 Vaccine Allocation Guidelines

February 13, 2021

Based on available supply, individuals described below are or will be eligible for COVID-19 vaccines:

- Phase 1A* (healthcare workers and LTC residents): 3,142,166 Californians
- Phase 1B
 - Food/Agriculture***, Education/Childcare**, and Emergency Services***: 5,960,528 Californians
 - 65+: 6,254,300 Californians

Beginning March 15, healthcare providers may use their clinical judgement to vaccinate individuals age 16-64 who are deemed to be at the very highest risk for morbidity and mortality from COVID-19 as a direct result of one or more of the severe health conditions included in [this provider bulletin](#).

INFORMATION ONLY: Phase 1b: Essential Workers and Individuals 65+

Individuals 65+ who register in Othena will be given highest priority in the 'virtual waiting room'.

Everyone will be allowed to register on Othena, and when they register, they will indicate which, if any, occupational group they belong to. If they indicate Educator/Childcare, Food or Agriculture Worker or Emergency Responder, they will be asked to attest to the fact that they are employed in one of these sectors.

Private child care and home school staff will be eligible to receive vaccine from the Super PODs. The Orange County Department of Education is providing vaccinations to private and public educational staff age 65+ using dedicated mobile PODs, as well as to private and public educational staff under 65 (based on proportion of county's vaccine allocation that is available for this category).

It will be up to other providers (pharmacies, MCEs, community clinics) how they will verify employment.

FOR INFORMATION: Individuals with Chronic Medical Conditions or Other Disabilities Creating High Risk

Health plans, medical groups and clinics will identify and vaccinate their members/patients who satisfy eligibility on the basis of the State's guidelines, to the extent possible.

For those who are not members of a health plan, medical group or clinics that can vaccinate them, they will verify their health condition using Othena or some other method, and self-attest to it.

Individuals with chronic health conditions who have unique access barriers due to their condition will be given special supports to assure timely vaccination. This will include individuals with developmental and physical disabilities. (Applicable to allocations to HCA.)

NOTE: It is anticipated that CDPH will offer additional guidance on how to vaccinate this population.

RECOMMENDATION: Allocating Different Vaccine Platforms

All individuals will be given the opportunity to indicate which vaccine(s) they are willing to receive.

- An individual's appointment will only be scheduled for a vaccine clinic providing one of the selected platforms.
- This will prevent individuals from being scheduled to receive a vaccine they will not accept.

Differences between the various vaccines, in terms of both efficacy and use of fetal cell lines, will be delineated in clear language on Othena and the HCA website (not just a link to CDC or somewhere else).

- A fact sheet with this information will be offered to those who register without Othena; this fact sheet will be available for use at other vaccination sites in the county.

Vaccine Effectiveness Data (to be shared on Othena & fact sheets)

Vaccine	Type	Doses	Ages	Effectiveness*			References
				Prevention of Any Symptoms	Prevention of Severe Symptoms	Prevention of Hospitalization or Death from COVID	
Pfizer	nRNA	2	16+	95%	90%	100%	Pfizer COVID-19 Vaccine EUA Letter of Authorization reissued 12-23-20 (fda.gov)
Moderna	mRNA	2	18+	94.1%	100%	100%	Moderna COVID-19 Vaccine EUA Letter of Authorization (fda.gov)
Johnson & Johnson	Viral vector adenovirus (cold virus)	1	18+	66% (U.S. 72%)	85%	100%	Vaccines and Related Biological Products Advisory Committee February 26, 2021 Meeting Briefing Document- Sponsor (fda.gov)

*Effectiveness is measured as the rate of symptoms in the placebo group minus the rate of symptoms in the vaccine group divided by the rate of symptoms in the placebo group.

Use of Fetal Cell Lines in Development, Production or In the Vaccine itself

Vaccine	Fetal Cells			
	In development	During production	In vaccine	Requires new fetal cells?
Pfizer	No	No	No	No
Moderna	No	No	No	No
Johnson and Johnson	Yes**	Yes**	No	No

** laboratory grown cell lines from derived from retinal cells from a single aborted fetus cells in 1985, which aid in generating the vaccine, but are not present in the final vaccine product.

FUTURE RECOMMENDATION: Opening Eligibility to All

On a date to be determined, all individuals who live or work in Orange County will be eligible for a COVID-19 vaccination.

There will be targeted approaches to vaccinate individuals in Phase 1a and Phase 1b to support their priority access.

Gaining Feedback and Guidance

Please use the Survey Monkey available at this link (see chat and email) to answer the following questions:

- Question 1: Do you agree with the recommended approach to allocating the vaccination platforms?
 - If you do not agree, what modifications are necessary to gain your agreement?
- Questions 2: What are your recommendations for timing and approach to opening up eligibility to all individuals who live or work in Orange County?

NOTE: We will place the Zoom on pause for 5 minutes while you respond to the above questions.



**Review of Responses
&
Brief Discussion as Needed**



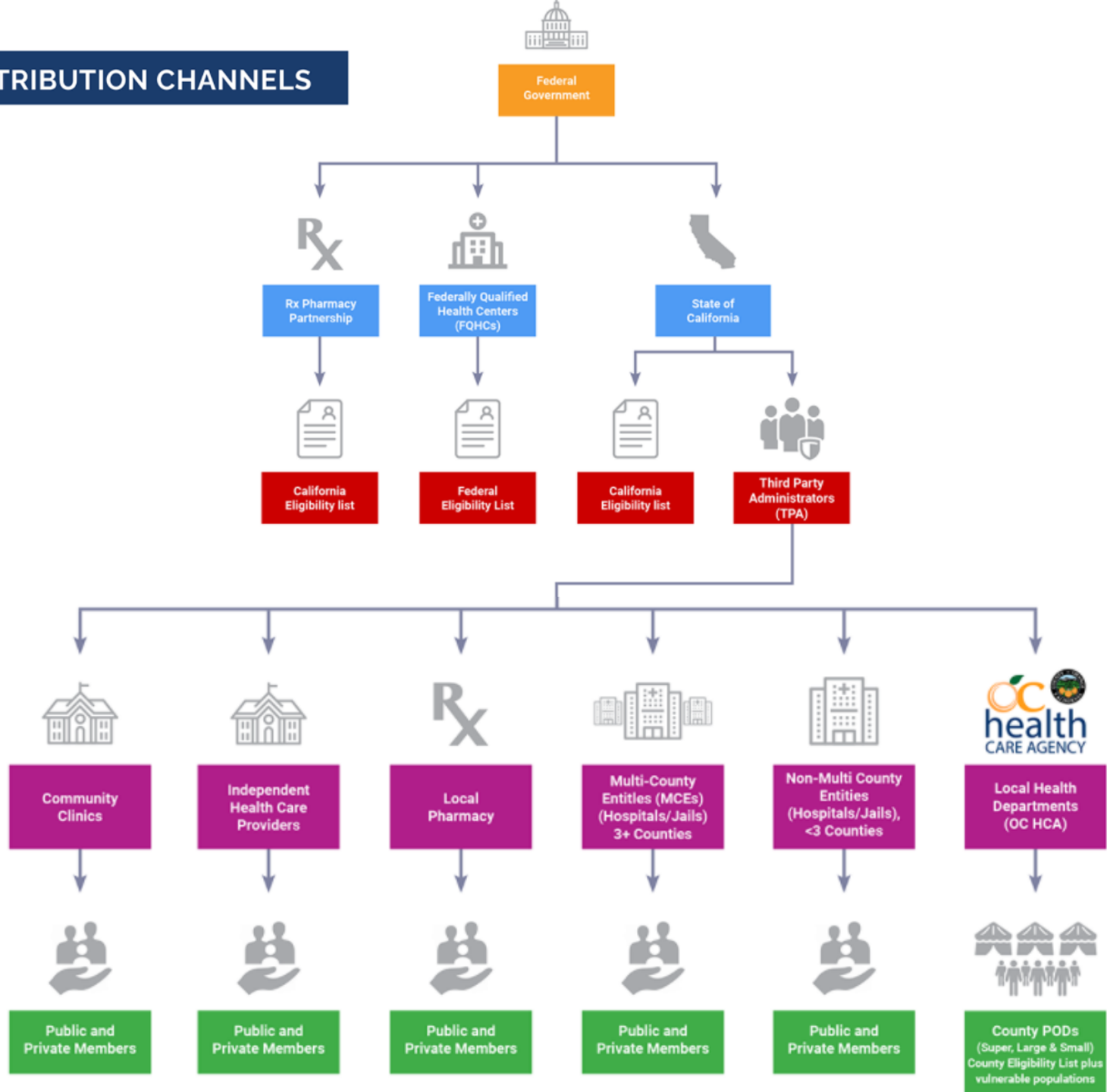
Next Steps

The HCA Director will review these results and recommendations to develop a final plan. We will share the final decisions once they have been made.



Updates & Sharing about the TPA

COVID-19 VACCINE DISTRIBUTION CHANNELS





Final Thoughts?

Thank You!